



APS | Accurate Positioning System

The all-in-one precise positioning solution to boost underground mapping productivity under any conditions.



The **highest accuracy** solution to locate your underground assets.

IDS GeoRadar: The leader in multi-frequency and multi-channel Ground Penetrating Radar

www.idsgeoradar.com



APS | Accurate Positioning System

The all-in-one precise positioning solution to boost underground mapping productivity under any conditions.

APS | Accurate Positioning System is the premium positioning module combining GNSS+INS technology by NovAtel with advanced trajectories algorithms to obtain the most accurate radar information in poor or no satellite coverage scenarios ranging from urban canyons to tree-lined roads up to tunnels and underpasses.



URBAN CANYON



TREE-LINED ROAD



UNDERPASS



Precise positioning in all conditions: APS solves positioning issues related to poor GSSN coverage: urban canyon, tunnel, underpass and tree-lined road.



Simplify and speed-up the entire workflow: collect huge amount of data in less time and in any environment with easy radar data interpretation.

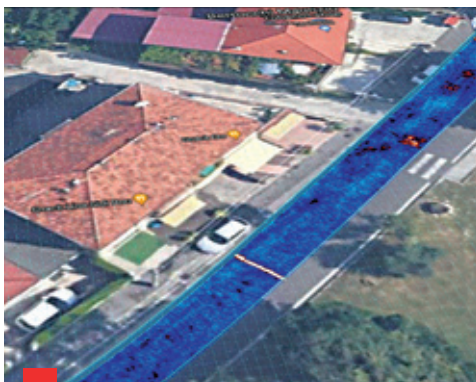


Fully integrated solution: setting-up, diagnostic and processing trajectories data are easily managed by uMap and IQMaps, no additional software are needed.

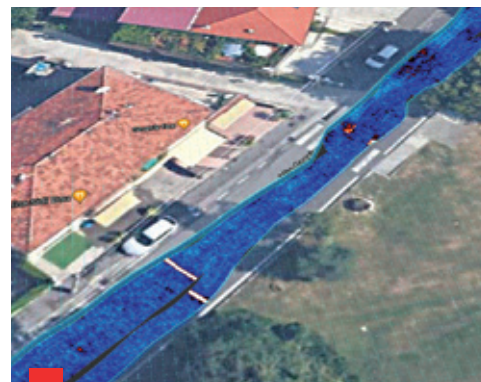


Set-and-forget: designed to be assembled in less than 10 minutes using standard tools, APS can be mounted on Stream UP central frame with no mechanical changes.

APS is the turn-key accurate positioning solution to minimize time and cost for data collection and extraction process: no manual trajectory adjustments are needed and positioning errors related to GNSS coverage issues are minimized.



APS | Accurate Positioning System



Standard positioning system

Map your targets with the highest accuracy under any condition: APS covers all kinds of environments using only one positioning module.

APS | Accurate Positioning System

The all-in-one precise positioning solution to boost underground mapping productivity under any conditions.

APS KIT INCLUDES:



1 GPS Passive Antenna
(Hexagon | NovAtel)

2 PwrPak7 (Hexagon | NovAtel) +
Mechanical Support Plate

3 Coupling
Kit

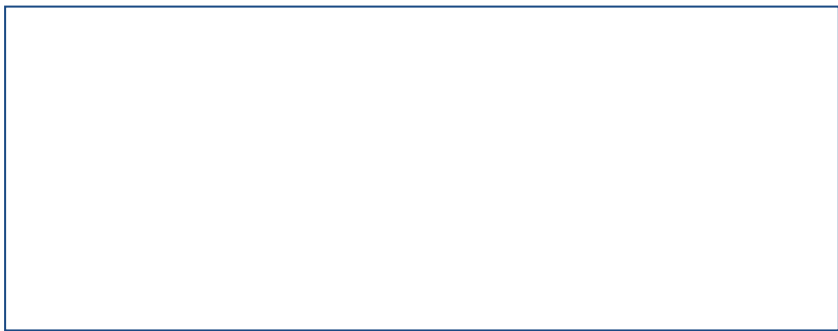
4 DC Power
Cable

7 LAN Cable

6 DB26-DB9
COM Cable

5 RF Cable

SYSTEM SPECIFICATIONS			
PERFORMANCE DURING GNSS OUTAGES	Horizontal position accuracy 2 cm (GNSS signal outage 10 sec)	CERTIFICATION	CE, FCC, ISED
SIGNAL TRACKING	GPS L1 C/A, L1C, L2C, L2P, L5 GLONASS2 L1 C/A, L2 C/A, L2P, L3, L5 Galileo E1, E5 AltBOC, E5a, E5b, E6 BeiDou B1I, B1C, B2I, B2a, B3I QZSS L1 C/A, L1C, L2C, L5, L6 NavIC (IRNSS) L5 SBAS L1, L5 L-Band up to 5 channels	GNSS DATA RATE	10 hz
POWER CONSUMPTION	3.4 W	POWER SUPPLY	12V - powered by the SCU (Stream UP)
TEMPERATURE OPERATING RANGE	-40°C to +75°C	WATERPROOFING	IP65



IDS GeoRadar Srl
Via Augusto Righi 6, 6A, 8, 56121 Pisa (PI) Italy
Tel. +39 050 89 34 100
www.idsgeoradar.com
info@idsgeoradar.com

